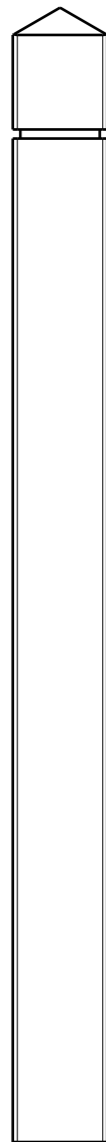
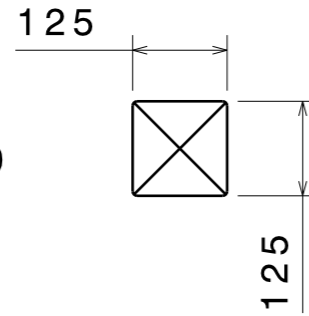


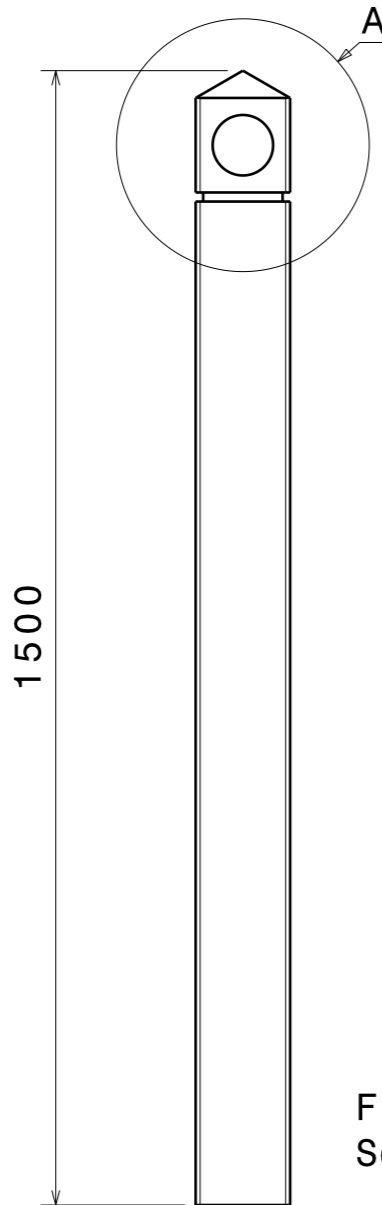
IF IN DOUBT ASK

ISSUE	DESCRIPTION	T/O No.	DRAWN	DATE	APPROVED	DATE
A	RELEASE FOR CUSTOMER APPROVAL	tba	E.C		-	-

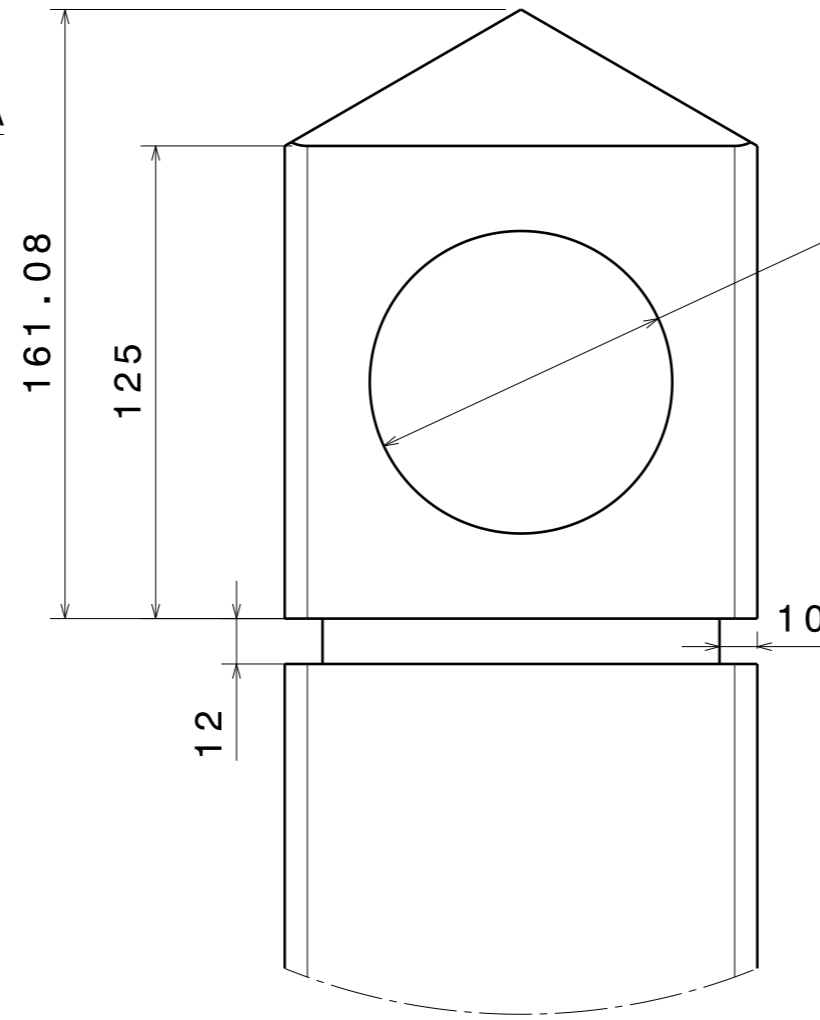
Top view  
Scale: 1:10



Right view  
Scale: 1:10

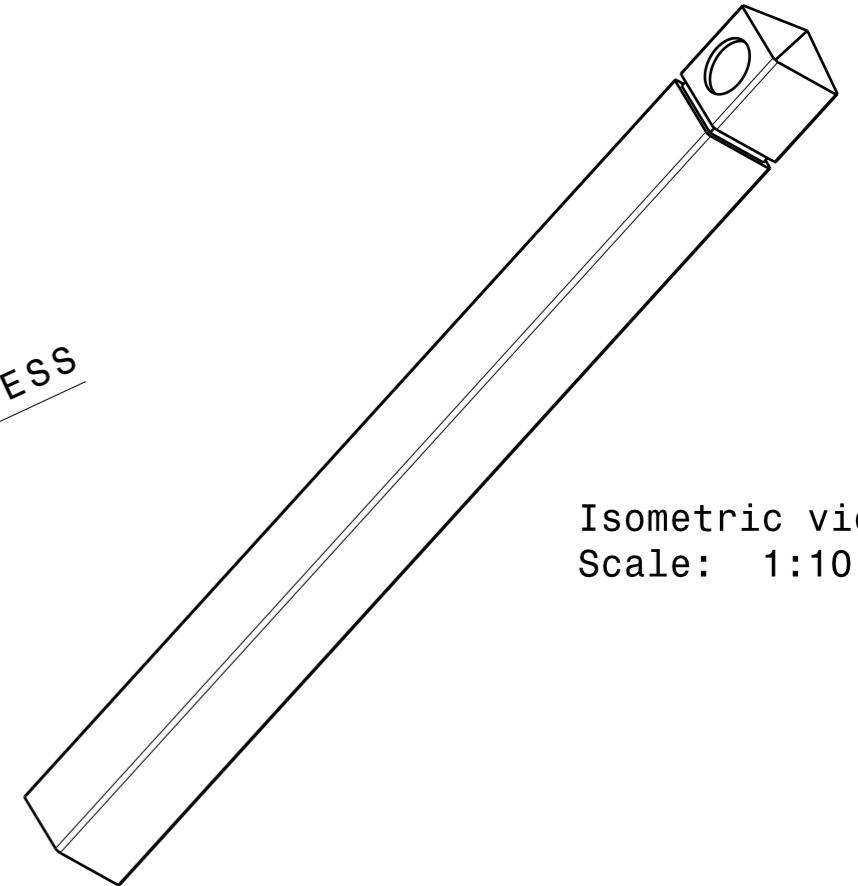


Front view  
Scale: 1:10



Detail A  
Scale: 1:2

Ø80 x 8 RECESS



Isometric view  
Scale: 1:10

QUALITY NOTE

**STRAIGHTNESS**  
Product will have no more than a 1:50 bend

**SWELLING**  
Product may have up to 5% swelling

**SINK**  
Product may have up to 3% sinkage predominantly on the end cuts

**SURFACE FINISH**  
Product may have small bumps on the exterior surface Each not exceeding 8mm diameter x 4mm high No more than 10 surface bumps per metre

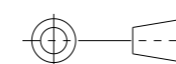
**LENGTH**  
Product may be up to 25mm longer than the specified length

**VOIDS**  
Product may have small voids not exceeding 5mm. No more than 2 voids per section cut.

**CORNER TEARING**  
There may be a small amount of corner tearing Each not exceeding 5mm wide x 2mm deep Not exceeding 4 aberrations per metre

**Notice**

This drawing was prepared by the staff of Advanced Plastic Recycling and the copyright therein belongs to the company. All rights conferred by the law of copyright and by virtue of international copyright conventions are reserved to the company. Reproduction requires the prior written consent of the company. As the drawing may incorporate confidential information of the company, its disclosure to others requires the company's prior written consent. Any infringement of this copyright may result in legal action.



THIRD ANGLE  
PROJECTION



Advanced Plastic Recycling,  
9/500 Churchill Road  
KILBURN SA 5084

TELEPHONE (08) 8359 4999  
FACSIMILE (08) 8359 4988  
A.B.N. 75 858 453 725

DESIGNED	E.C	SCALE	AS SHOWN	MATERIAL	A.P.R - W.P.C
DRAWN	E.C	© DATE	7-10-2015	TOOL No.	
CHECKED	K.C	APPROVED	C.L	SHEET	1 OF 1
PART NAME	125x125 Bollard			PART NO.	